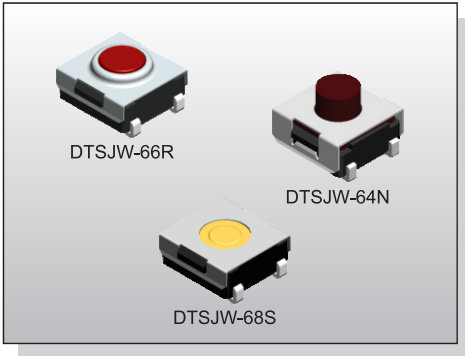


# TACT SWITCH DTSJW-6 SERIES

6x6 J SMT  
Washable Type



## FEATURES

- ※Sealed
- ※Reflow solderable
- ※Dust proof with high reliability

## APPLICATION

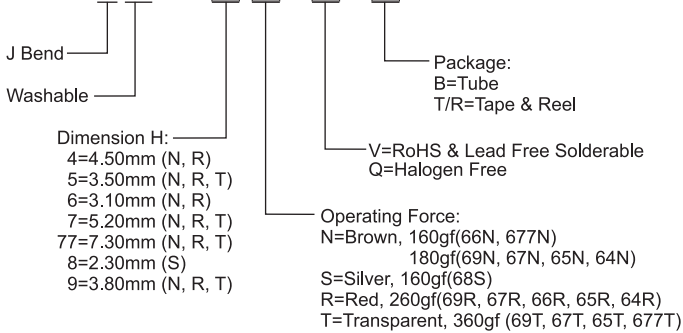
- ※Audio, OA equipment
- ※Instrumentation, Communication
- ※White goods

## SPECIFICATION

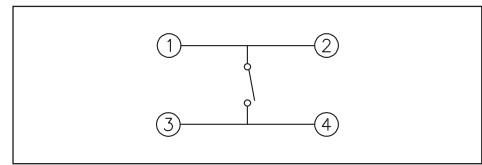
|                       |                                                                                                                                                                   |
|-----------------------|-------------------------------------------------------------------------------------------------------------------------------------------------------------------|
| Contact Rating        | 50mA, 12V DC                                                                                                                                                      |
| Contact Resistance    | 100mΩ max.                                                                                                                                                        |
| Insulation Resistance | 100MΩ min. 500V DC                                                                                                                                                |
| Dielectric Strength   | 250V AC/1 minute                                                                                                                                                  |
| Operating Force       | 160±50gf, Brown(N) 66/677<br>160±50gf, Silver(S) 68<br>180±50gf, Brown(N) 69/67/65/64<br>260±70gf, Red(R) 69/67/66/65/64<br>360±90gf, Transparent(T) 69/67/65/677 |
| Travel                | 0.25mm 68S/66N/66R/677<br>0.45mm (69/67N,R)/(65/64N,R,T)<br>0.6mm 69/67T                                                                                          |
| Operating Life        | 100,000 cycles min. for 68/66/677<br>500,000 cycles min. for 69/67/65/64                                                                                          |
| Operating Temp.       | -40°C ~ +85°C                                                                                                                                                     |
| Storage Temp.         | -40°C ~ +85°C                                                                                                                                                     |

## HOW TO ORDER

D T S J W - 6



## CIRCUIT



## PACKAGE

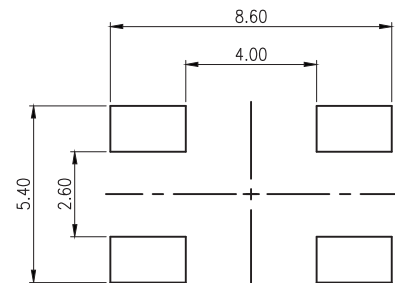
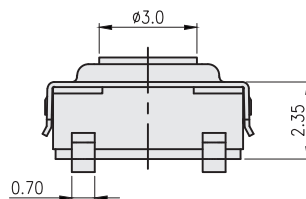
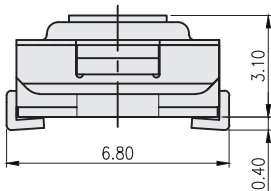
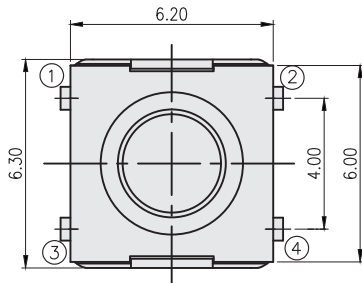
<Tube>

75 pcs

<Tape & Reel>

DTSJW-64, 67: 900 pcs  
DTSJW-65, 69: 1800 pcs  
DTSJW-66: 1900 pcs  
DTSJW-68: 2000 pcs  
DTSJW-677: 650 pcs

## DTSJW-66



P.C.B. LAYOUT

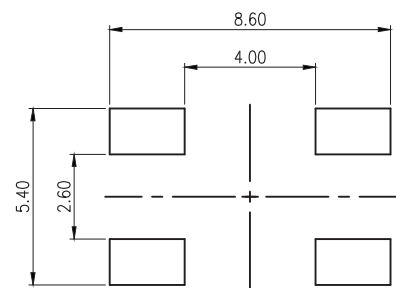
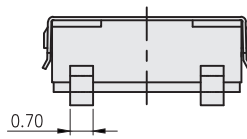
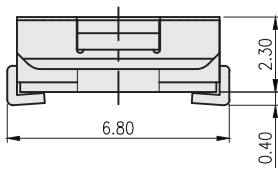
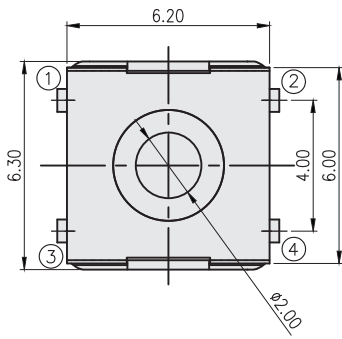
TACT SWITCH

TACT SWITCH  
**DTSJW-6** SERIES

6x6 J SMT  
 Washable Type



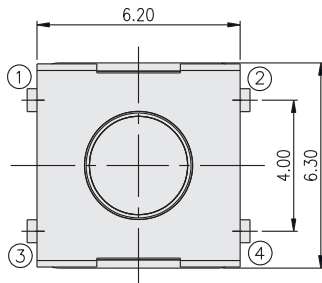
DTSJW-68



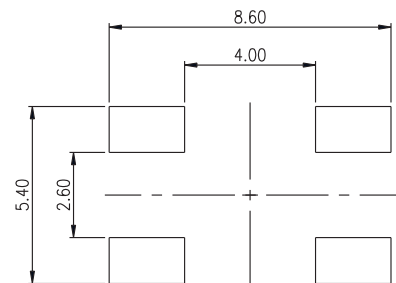
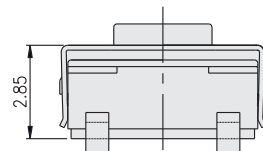
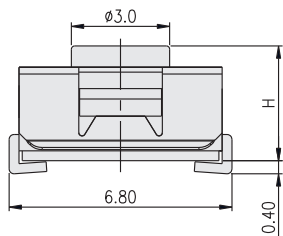
P.C.B. LAYOUT

TACT SWITCH

DTSJW-6□



| PART NO.  | H    |
|-----------|------|
| DTSJW-64  | 4.50 |
| DTSJW-65  | 3.50 |
| DTSJW-67  | 5.20 |
| DTSJW-69  | 3.80 |
| DTSJW-677 | 7.30 |



P.C.B. LAYOUT